

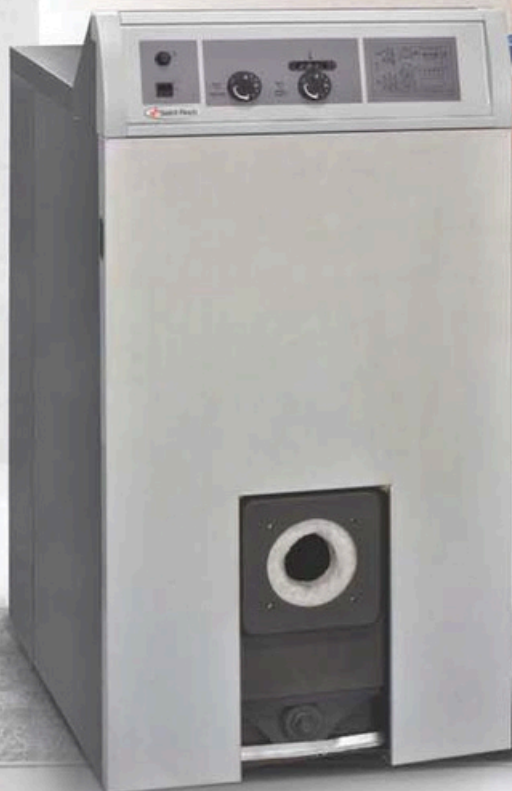


SAMBA
PLUS

SAMBA 200

**CAST IRON BOILER
OIL & GAS FIRED**

**Rated Output:
92Kw to 203 Kw**



MADE IN ITALY

- **SAINT ROCH**
Hypoeutectic grey cast iron
- **8 model range from:**
92 Kw - 203 Kw
- **Efficiency:**
at 30% charge 90-91.1%
at 100% charge 90.6-91.6%
- **Operates with forced draught oil or gas burners**
- **Resistant to condensation**
- **Operates at low or sliding temperatures**
- **6 Bar working pressure**
- **Economizers in flue ways increase efficiency**
- **Refractory cord between elements**
- **Ideal for collective applications (Ecogroupage)**
- **10 year guarantee**
- **Economic/energy saving eco-friendly.**

SAMBA 200



The Samba 200 is a medium power boiler that satisfies all individual, collective and industrial applications. It has a cast iron body with an anti-corrosion combustion chamber.

The Samba 200 is economic and can be equipped with a forced draught oil or gas burner.

Ideal for building Ecogroup cells and operates at low and sliding temperatures.

